

Updated 1-30-24

Request for Bids for 2023 SCC North Spit Dune Resilience Project

SUMMARY OF 1-30-24 UPDATES

- Questions deadline extended to **1-30-24 at 5p**. We will respond to questions by noon 1-31-24
- Removed language about a bid being chosen on a “time and materials” basis.

Redwood Community Action Agency (RCAA) is requesting bids for subcontractors to assist with the 2024-2026 SCC North Spit Dune Resilience Project (“project”). Subcontractors will assist in the removal and burial of invasive lupine (*Lupinus arboreus*), other shrubs, beachgrass, and duff using heavy equipment across approximately 70 acres of dune habitat. Work will occur on the US Fish and Wildlife Service’s (USFWS) Wadulh Unit on the north spit of Humboldt Bay in Humboldt County.

I. Bidder Selection Schedule

Following is a tentative timeline:

Solicitation Released	January 16 , 2024
Mandatory Pre-Bid Site Visit	January 19, 2024
Deadline for submitting questions	January 30, 2024 5 pm
Bids Due	January 31, 2024
Contract Award	February 6, 2024

I. Instructions for Submitting Bids and Qualifications

Entities considering bidding on the project are advised to notify RCAA of their interest. RCAA will provide interested entities email notifications of any solicitation addendums. To receive notifications, provide your firm’s name, primary contact and email address to the email address listed below.

In order to submit a bid, all interested bidders must attend the **mandatory pre-bid site walk** on **January 19, 2024, at 1:00 pm**. An FWS staff member will meet bidders at the Mad River Park Gate to provide a site walk-through.

Updated 1-30-24



Bids must be submitted electronically (.pdf) to the email address below. Submitted bids must include the bid title in the email subject line. The submitter is responsible for ensuring that they receive email confirmation that their bid is received. Bids received after the deadline stated above shall not be considered.

Submit Bids To:

Redwood Community Action Agency
Susannah Ferson, Project Manager, Executive Director of Natural
Resources Division
sferson@rcaa.org

A. How to Obtain Bid Documents

Copies of the solicitation and attachments may be obtained at:

Redwood Community Action Agency OR <https://www.naturalresourcecesservices.org/publications/>
904 G Street,
Eureka, CA 95501

II. Questions about the Solicitation

Questions must be submitted in writing by email to Susanah Ferson, Project Manager, at the email address listed above.

Please submit questions as soon as possible. No questions regarding this solicitation will be responded to if received after **January 30, 2024, at 5:00 p.m.**

Updated 1-30-24

All pertinent questions will be responded to via email, and answers will be sent to all interested bidders. Questions and answers may be published on the RCAA webpage alongside other bid package documents.

Once the solicitation is issued, and until a notice of award is published, each Proposer and its representatives, agents, and affiliates, shall not contact RCAA staff or project partners, other than those listed expressly for contact in this solicitation, to discuss or ask questions about the contents of this solicitation or the selection process. All questions shall be submitted in writing as described above. Inappropriate contacts may result in the bidder's disqualification.

III. Project Overview

The project will occur on lands owned by the USFWS. The Wadulh Unit (USFWS) is dominated by dense European beachgrass, dense lupine scrub, and many plant species of nonnative origin and native species that do not normally grow in the native dune mat community, such as coyote brush and California polypody (a coastal fern). The project will employ Integrated Pest Management (IPM) to remove invasive species and replace them with native plants. Invasive European beachgrass is awaiting revegetation with native American beachgrass. The Wadulh Unit is not currently open to public use and access but will be, following restoration.

On 70 acres of the Wadulh Unit, RCAA will subcontract out for a heavy equipment operator to utilize a bulldozer and/or excavator to remove lupine, beachgrass, and duff, and dispose of them in six (6) foot deep trenches capped with three (3) feet of clean sand.

The overall project will be utilizing multiple methods (aka IPM) to restore native dune habitat, as listed below. The restoration method the subcontractor will be employing is listed in **bold**.

Restoration methods include:

- **heavy equipment to remove lupine and beachgrass, undesired shrub layer, and duff; bury degraded soils/removed plants and expose clean sand**
- manual removal of beachgrass and lupine
- flaming of annual grasses
- manual duff removal in affected soils
- herbicide only on dense stands of beachgrass
- native dune plant seeds will be collected, propagated, and grown out before planting following lupine and beachgrass removal
- replanting with native dune species to restore dune ecosystem function

IV. Scope of Work

The scope of work ("work") targets approximately 70 acres of dunes covered by a scrub community composed of yellow bush lupine, coyote brush, California polypody fern, annual grasses, mosses ("undesired shrub layer"), and often a layer of duff that can be several inches deep. Some areas are covered with European beachgrass. The woody scrub/shrub layer is approximately five (5) feet tall. Vegetation covers one large continuous area and several smaller disjunct areas.

Updated 1-30-24

The goal of the work is to remove the undesired shrub/grass layer and bury it below three (3) feet of clean sand. This is done by:

- 1) excavating a trench or area down to six (6) feet, separating the organic material from the clean sand beneath the top three (3) feet
- 2) excavating the shrub layer next to the trench including three feet beneath the layer
- 3) placing the organic material/sand excavated in step 1 in the six (6) foot-deep trench
- 4) placing the clean material excavated set aside in step 1 over the buried organic material/sand.

A. Site Restrictions

- Areas of dune mat and swale vegetation must be avoided, and will be flagged by the Restoration Manager. Dune mat is a sparse, low growing community of native species (see photo). Swales are seasonal wetlands that generally support willow and pine, but may also support sedges and rushes (see photo below)



• Above: dune mat in foreground.

Updated 1-30-24



Above: willow swale in foreground

- The site is topographically diverse, with higher dunes and lower depressions. The goal is to keep the topography as close to pre-project as possible, recognizing that some change will occur from the steps involved.
- There are cultural sites, which will be flagged and must be avoided. A Wiyot Tribal Monitor will be present when working near a cultural site or low-lying areas.
- Work past March 15, 2024, will need to proceed each day after an FWS staff person sweeps the area for nesting birds. If nesting birds are present, work will be delayed on that area.

An FWS staff person will be on site for most of the work and can be reached by phone otherwise. Any questions about techniques, etc. should be referred to FWS personnel once work has commenced.

B. Site Logistics

A map of the project site showing the targeted vegetation in georeferenced-PDF form can be uploaded to the AVENZA mapping app, a free phone application available from Android and iOS app stores. This allows you to see where on the map you are at any given time.

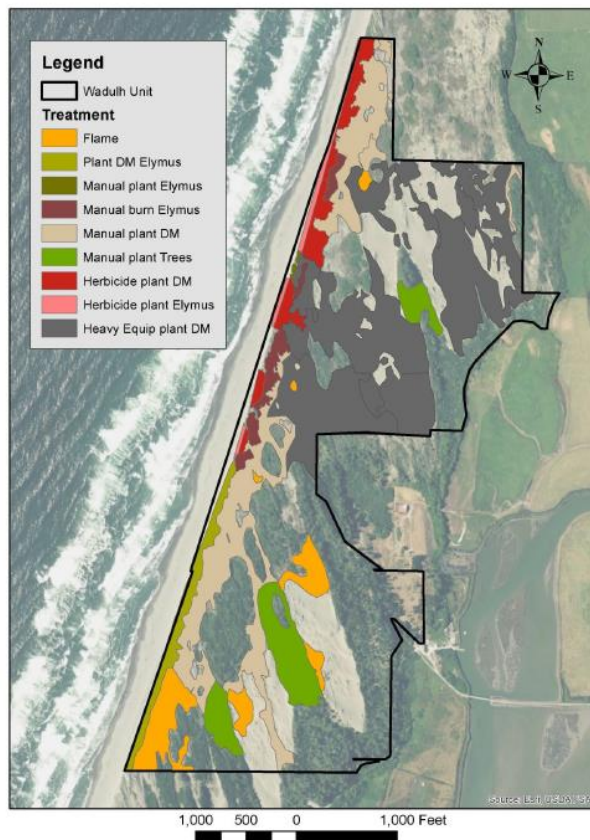
The site is accessed through the Mad River Park gate, and the equipment must be driven approximately a mile down the beach. A key will be available to get through the gate.

C. Work Timeline

Work is to begin in mid-February of 2024, after the contract is finalized.

Updated 1-30-24

Work is to be accomplished in Winter/Spring 2024.



USFWS Wadulh Unit Distribution of Invasives and Treatment Methods



V. Submission Requirements

Bidders are to provide a narrative demonstrating qualifications to conduct the proposed work; and a bid for the proposed work by completing the provided bid sheet.

Narrative demonstrating qualifications

Narratives should not exceed 20 single-sided pages. Provide the following:

- a. Resumes for key staff that would be working on the project. Demonstrate staff proficiency in all required skills to complete the project including:
 - i. Safe operation of heavy equipment in sand
 - ii. Sensitivity to and respect for cultural resources.
- b. Up to three examples of similar projects that were successfully completed by the project team.

Updated 1-30-24

- c. Between 3-5 professional references for people that are familiar with the project team's qualifications for the proposed work. Provide phone numbers and email addresses for the references.

Updated 1-30-24

Bid Sheet Redwood Community Action Agency 2023 SCC North Spit Dune Resilience Project		
Bid Task	Bid Item Description with Total Price Written in Words	Total Task Price
1	Excavation of invasive lupine, undesired shrub layer, and duff by heavy equipment. Excavation of 6' deep trenches, burial of removed vegetation in trenches, and capping of trenches with clean sand. 70 acres to be treated. Not to exceed _____ Dollars	
TOTAL COST		

A. Bid Sheet

Total Bid Written in Words: _____

It is further understood and agreed that:

- A. In case of a discrepancy between words and figures, the words shall prevail, and in case of a discrepancy between unit prices and totals, the unit price shall prevail.
- B. RCAA reserves the right to eliminate any section of this proposal from the contract without claim of the Contractor for profits lost.
- C. No verbal agreement or conversation with any officer, agent, or employee of RCAA or its project partners, either before or after the execution of the Agreement, shall affect or modify any of the terms or obligations of this proposal.
- D. RCAA will not be responsible for any errors or omissions on the part of the undersigned in making up their bid, nor will the bidder be released on account of errors.
- E. The undersigned bidder is properly licensed in accordance with the State of California Contractors' State License Law providing for the registration of Contractors.

Bidder's Name (printed)

Bidder's Signature

Date

Updated 1-30-24

VI. Award

The award will be made to the responsive bidder with the lowest total bid. A project manager will assess the information provided to ensure that it is complete and that the low bidder is qualified for the work. If the information provided is incomplete or the low bidder is not qualified, then the bidder with the next lowest bid will be tentatively selected and assessed by the review committee.

RCAA reserves the right to modify or terminate this solicitation at any stage if RCAA determines such action to be in its best interest. The receipt of proposals or other documents at any stage of the bid process will in no way obligate RCAA to enter any contract of any kind with any party.

RCAA and its project partners are not responsible for costs or damages incurred by proposers, shortlisted proposers, teams, team members, subcontractors or other interested persons in connection with this solicitation process, including all costs associated with preparing responses to this solicitation, and of undertaking due diligence and participating in any conferences, meetings, presentations, negotiations or other activities.

RCAA will attempt to negotiate a contract with the tentatively selected bidder. If RCAA is unable to do so, negotiation with that bidder will be terminated and negotiations will then proceed in the same manner with the other bidders in order of lowest bids first. If RCAA is unable to negotiate a satisfactory contract with any of the selected bidders, RCAA may select additional firms and continue the negotiation process.

VII. Rejection of Bids

Bids may be rejected if they show any alterations of form, additions not called for, conditional bids, incomplete bids, erasures, or irregularities of any kind. RCAA reserves the right to reject any and/or all bids.

VIII. Withdrawal of Bids

Any bid may be withdrawn at any time prior to the bid deadline provided that a request in writing, executed by the bidder or his duly authorized representative, for the withdrawal of such bid is filed with RCAA. The withdrawal of a bid will not prejudice the right of the bidder to file a new bid.

IX. Disqualification of Bidders

More than one bid from an individual, firm, partnership, or corporation, or combination thereof under the same or different names will not be considered. Reasonable grounds for believing that any bidder is interested in more than one bid for the work contemplated will cause the rejection of all bids in which such bidder is interested. If there is reason for believing that collusion exists among bidders, none of the participants in such collusion will be considered in future bids. Bids in which the prices obviously are unbalanced may be rejected.

Updated 1-30-24

X. Full Opportunity

RCAA's policy prohibits discrimination or preferential or discriminatory treatment because of race, color, religion, sex, gender, gender identity, gender expression, national origin, ancestry, age, physical or mental disability, cancer-related medical condition, a known genetic pre-disposition to a disease or disorder, veteran status, marital status, or sexual orientation. The successful Respondent shall comply with the RCAA's non-discrimination policy.

RCAA reserves the right to reject any or all proposals, to waive any irregularities or informalities not affected by law, to evaluate the proposals submitted and to award the contract according to the proposal which best serves the interests of RCAA.

XI. Prevailing Wage Requirements

The work to be completed requires Prevailing Wages as required by the California Department of Industrial Relations (DIR). Work specifically involving the use of heavy equipment on landscape construction projects is subjected to Prevailing Wage requirements. General Prevailing Wage Rate Determinations applicable to this project may be obtained from the DIR website at: <https://www.dir.ca.gov/OPRL/DPreWageDetermination.htm>.

Bidders acknowledge that State General Prevailing Wage Rates will apply for this contract and, if awarded, it is the Bidder's responsibility to ensure the payment of appropriate prevailing wage rates to all employees who participate on the Agreement throughout the Project duration.

Bidders agree to comply with all of the applicable provisions of the Labor Code including those provisions requiring the payment of not less than the general prevailing rate of wages. Bidders further agree to the penalties and forfeitures provided in said Code in the event a violation of any of the provisions occurs in the execution of this Agreement.

XII. Waste Reduction and Recycling Program

The California legislation AB 939 (1989 CA Integrated Waste Management Act) requires all cities and counties in California to divert 50% of their waste streams away from landfills through recycling, reuse, and reduction programs. RCAA strongly recommends that applicable construction/demolition debris be diverted out of landfills whenever possible.

XIII. Addenda

If any person contemplating submitting a bid for the proposed contract is in doubt as to the true meaning of any part of the scope of work or other proposed Contract Documents, they may submit to RCAA a written request for an interpretation or correction thereof. The person submitting the request shall deliver said request as described in the 'Questions about the Solicitation' section above. Any interpretation or correction of the proposed documents will be made only by an Addendum duly issued; and a copy of such Addendum will be mailed or delivered to each person receiving a set of such documents. The Board of Commissioners will not be responsible for any other explanations or interpretations of the proposed documents.

Updated 1-30-24

XIV. Attachments

The following documents are pertinent to this solicitation: (insert pdf document links)

- Special Use Permit
- SCC Work Program Contractor and Grantee Report on Compliance with Economic Sanctions in Response to Russia's Actions in Ukraine – SCC Grant 23-050